



The 7 Series is a 'd' certified light fitting designed for maximum light output using a wide variety of lamps, including power saving low energy compact versions. It offers the following benefits:

- Robust, long life Zone 1 fitting
- Easy access tray for fast re-lamping
- Wide range of voltage options
- Wide range of sizes
- Large range of lamp options
- IP68 versions
- Internally mounted batteries giving 3hr emergency duration
- EOL lamp protection
- 50,000 hour electronic ballast
- Compact lamp version option, more light, less space

## Typical applications

Chemical sites	Offshore	Paint spray shops	Fuel storage facilities
Refineries	Marine	Grain storage	Water treatment plants
Docks / jetties	Pharmaceutical	Paper mills	Metal treatment plants

## Specification & options

Specification	Details
Certification Code (Gas)	II 2 G Ex d IIB/IIC Gb T6, T5 or T4
Certification Code (Dust)	To be confirmed
Protection type	Ex d (flameproof)
ATEX type class	Group II Category 2 G
Certification standards	EN 60079, IEC 60079
Certificate(s)	SIRA01ATEX1033, IEC Ex SIR09.0029X
Suitable zoned areas	Zone 1 and Zone 2
Gas group suitability	IIA, IIB, and IIC
Material	Marine grade aluminium body with high impact polycarbonate tube
Ingress protection (IP rating)	IP66 minimum
Cable Entries	4 x M20—ISO (3 plugged) as standard. Other threads available.
Electrical connections	3 wire and earth. Cable size 4mm <sup>2</sup> max Through wiring versions available
Control Gear	Electronic ballast
Supply voltage (s)	220-240V, 120-277V, 12V, 24V, 48V call for details of versions available
Installation / Mounting	2 x M8 tapped holes
Relamp access	Via threaded end cover and slide out tray
Weight	3kg (size1), 5kg (size2), 7kg (size4), 8kg (size5), 9kg (size6) - See over for size details

Accessories	Details
Ballast	Available for all models except non maintained emergency versions
Battery	For emergency versions
Eyebolts	For mounting fittings
Charger inverter	For emergency versions

## Lamp types & 'T' ratings

Lamp Type	7 Series Standard		Certification Type
8W	T5@Ta=40°C	T4@Ta=52°C	Ex d IIC
18W	T6@Ta=40°C	T5@Ta=55°C	Ex d IIC
36W	T6@Ta=40°C	T5@Ta=55°C	Ex d IIB
58W	T6@Ta=40°C	T5@Ta=55°C	Ex d IIB
70W	T5@Ta=40°C	T4@Ta=55°C	Ex d IIB

Lamp Type	7 Series Emergency		Certification Type
8W	T5@Ta=40°C	T4@Ta=52°C	Ex d IIC
18W	T6@Ta=40°C	T5@Ta=55°C	Ex d IIC
36W	T6@Ta=40°C	T5@Ta=55°C	Ex d IIB
58W	T6@Ta=40°C	T5@Ta=55°C	Ex d IIB

Lamp Type	7 Series Compact		Certification Type
11W PL-S	T4@Ta=52°C	T5@Ta=40°C	Ex d IIC
18W PL-L	T4@Ta=52°C	T5@Ta=40°C	Ex d IIC
26W PL-C	T4@Ta=52°C	T5@Ta=40°C	Ex d IIC
36W PL-L	T5@Ta=55°C	T6@Ta=40°C	Ex d IIC
55W PL-L	T5@Ta=55°C	T6@Ta=40°C	Ex d IIC

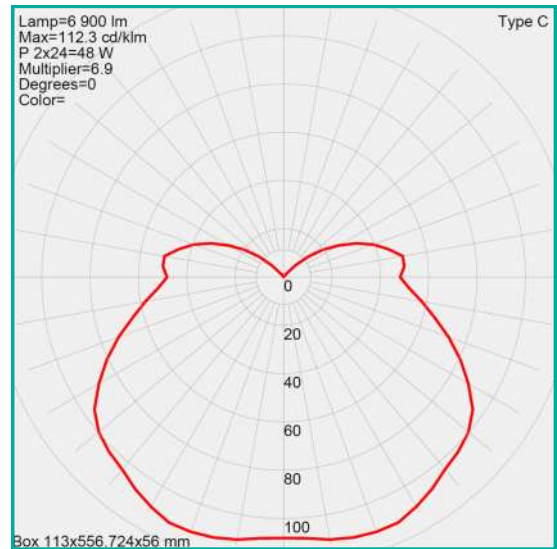
Lamp Type	7 Series Compact Emergency		Certification Type
18W PL-L	T6@Ta=55°C	T5@Ta=40°C	Ex d IIC
36W PL-L	T5@Ta=55°C	T6@Ta=40°C	Ex d IIC



## Sizes & Lamp options

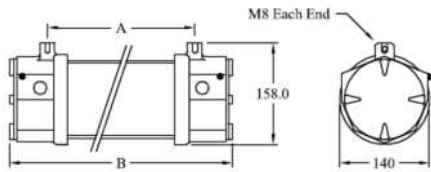
Size (see below for dimensions)	Versions *	Standard version lamp types /W	Emergency version lamp types /W	Compact version lamp types / W	Compact emergency version lamp types / W
1	S/E/C/CE	8 (S&T)**	8 (S&T)	11, 18, 26 (S&T)	18 (S)**
2	S/E/C/CE	18 (S&T)	18 (S&T)	36, 55 (S&T)	36 (S&T)
4	S/E	36 (S&T)	36 (S&T)	N/A	N/A
5	S/E	58 (S&T)	58 (S&T)	N/A	N/A
6	S	70 (S&T)	N/A	N/A	N/A

\* S = Standard fitting  
 E = Emergency version fitting  
 C = Compact version fitting  
 CE = Compact emergency version fitting  
 \*\* (S&T) = Single and twin tube lamp options  
 (S) = Single tube lamp option

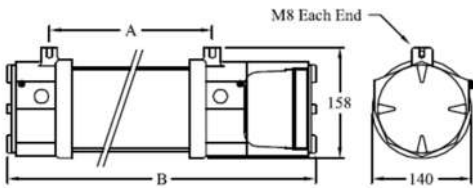


Photometric data available—contact for details

## Fixing & Dimensions



Standard & Compact versions



Emergency version

Size/ft	Lamp	A /mm	B/mm	Type available
1	8W	335	448	Standard, Emergency
1	11W, 18W, 26W	335	448	Compact, Compact Emergency*
2	18W	632	752	Standard, Emergency*
2	36W, 55W	632	752	Compact, Compact Emergency*
4	36W	1242	1362	Standard, Emergency*
5	58W	1542	1662	Standard, Emergency*
6	70W	1806	1926	Standard

\* add 87mm to B dimension for emergency versions

## Also available from Petrel



Zone 1 Wellglass



Zone 1 Floodlight



Zone 2 Fluorescent



Industrial Bulkhead



Hazardous area control equipment

Representation worldwide

[www.petrel-ex.co.uk](http://www.petrel-ex.co.uk)

Petrel Limited  
 22 Fortnum Close, Kitts Green, Birmingham, B33 0LB United Kingdom

T +44 (0)121 783 7161 • F +44 (0)121 783 5717

• E [sales@petrel-ex.co.uk](mailto:sales@petrel-ex.co.uk) • W [www.petrel-ex.co.uk](http://www.petrel-ex.co.uk)

Registered No. 1539429 England

Registered Office: Chuckery Road, Walsall WS1 2DU • VAT No. GB 695 8648 58