
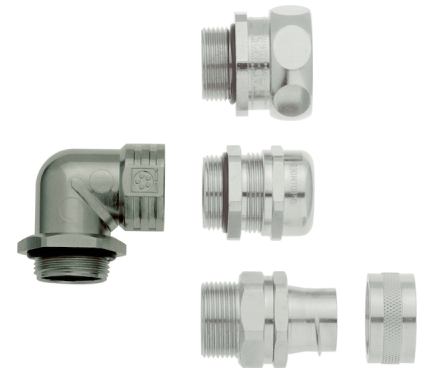


U.I. Lapp GmbH	<b>PRODUCT INFORMATION</b>	
	<b>SKINDICHT® RWV-M without E+D</b>	12.09.2012

Combination of different conduit glands is possible  
Space- and weight-saving application due to thin cable diameters  
Decrease in installation height  
Cable runs parallel to the housing wall  
Corrosion-resistant



### Application range

Angled glands are used in areas where cables have to run in parallel to the housing wall.  
Electric motor manufacturing  
Machine and equipment manufacturing  
Plant engineering  
Light and sound applications

### Design

Metric connection thread acc. to EN 50262

### Note

The protection class is dependent on the combination with the various special glands. The minimum standard is IP 55.  
Counter nut to be used: SKINDICHT® SM-M

### Remark

Photographs are not to scale and do not represent detailed images of the respective products.

### Technical Data

Material:	Body: zinc die-casting Hexagon nut: nickel-plated brass O-ring: NBR
Protection rating:	IP 55
Temperature range:	-20°C to +100°C


Product Management	Document: LAPP_PRO1021EN.pdf	1 / 3
--------------------	------------------------------	-------

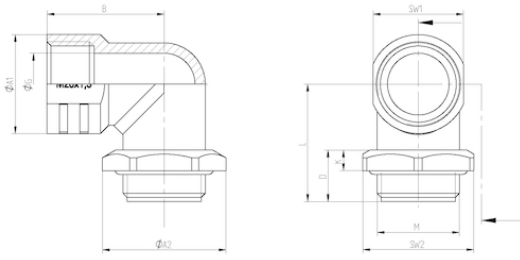


**SKINDICHT® RWV-M without E+D**

12.09.2012

Part number	Article designation / size	B in mm	Thread length/ D (mm)	K	L	Ø G	SW1	Ø A1	SW2	Ø A2
SKINDICHT® RWV-M without E+D										
52107801	12 x 1,5	21.0	11.5	5	21.0	8.0	14	16	17	18.9
52107811	16 x 1,5	23.0	11.5	5	24.0	12.0	18	20	22	24.5
52107821	20 x 1,5	28.5	12.5	5	29.0	15.0	22	24	27	30.1
52107831	25 x 1,5	30.0	13.5	5	31.0	20.0	27	29	32	35.7
52107841	32 x 1,5	33.5	13.5	5	33.0	27.0	34	33.5	41	45.6
52107851	40 x 1,5	43.0	15.5	5	43.0	35.0	42	43	46	50.6

U.I. Lapp GmbH	<b>PRODUCT INFORMATION</b>	 <b>LAPP GROUP</b>
	<b>SKINDICHT® RWV-M without E+D</b>	<b>12.09.2012</b>



Product Management	Document: LAPP_PRO1021EN.pdf	3 / 3
--------------------	------------------------------	-------